

# WALDEN CONSUMER SQUARE

1722-1750 WALDEN AVE | CHEEKTOWAGA, NEW YORK

**RETAIL SPACE AVAILABLE**



**THE BENCHMARK GROUP**

4053 MAPLE ROAD  
AMHERST, NY 14226  
PHONE (716) 833-4986 EXT 382  
WWW.BENCHMARKGRP.COM  
KEVIN ZUGGER  
KZUGGER@BENCHMARKGRP.COM

# WALDEN CONSUMER SQUARE

1722-1750 WALDEN AVE  
CHEEKTOWAGA, NEW YORK

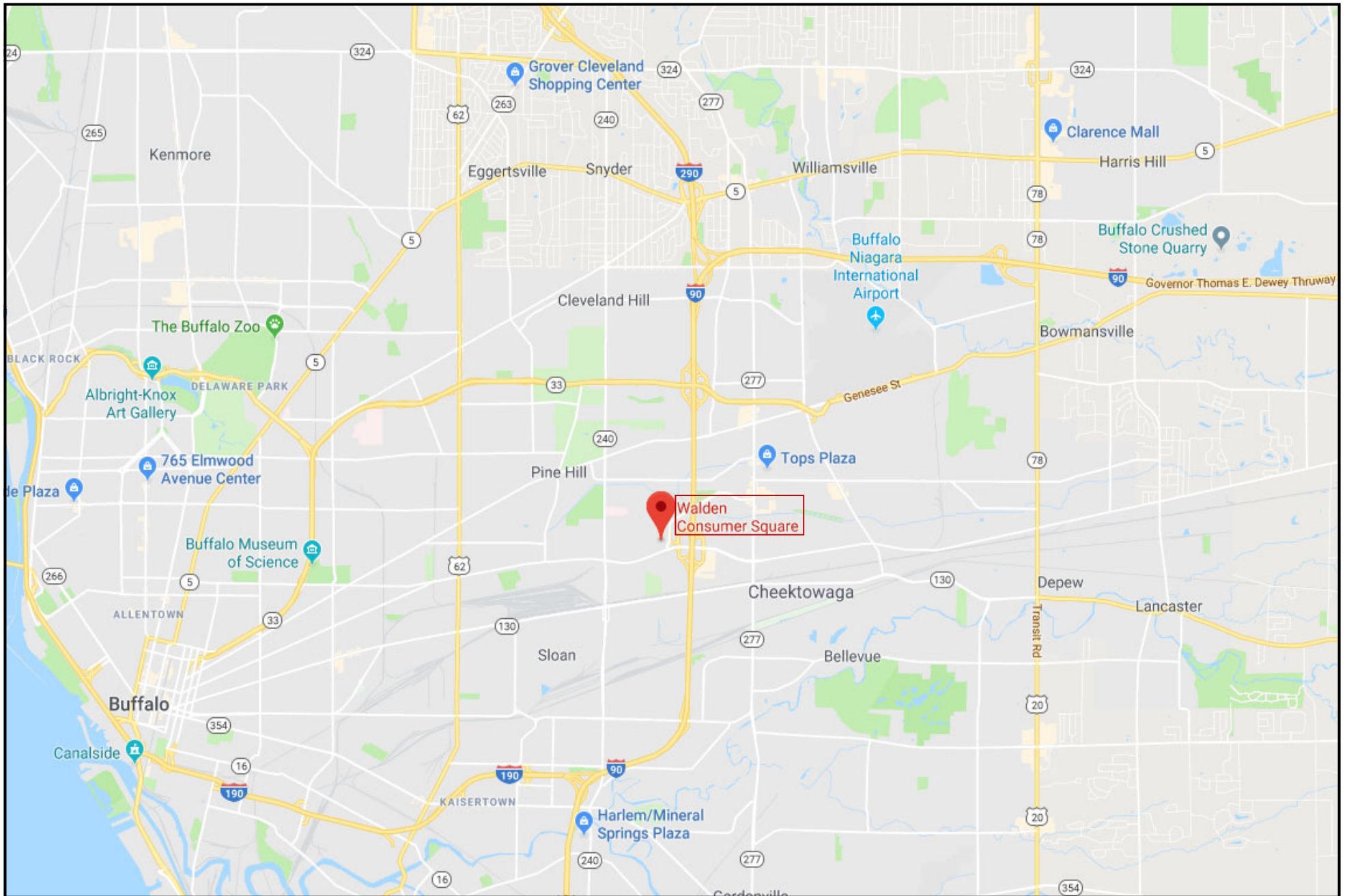
- AVAILABLE FOR LEASE: 4,000 SQUARE FEET OF END-CAP RETAIL SPACE
- 253,000 SQUARE FOOT SHOPPING CENTER ON 21.93 ACRES ANCHORED BY TARGET, MICHAELS, PRICE RITE, PETSMART AND OFFICE DEPOT ALONG WITH SKECHER'S, FIVE BELOW, CITIZEN'S BANK, THE GOOD FEET STORE AND KING CRAB
- LOCATED 1/2 MILE FROM 1.6 MILLION SQUARE FOOT WALDEN GALLERIA MALL ANCHORED BY MACY'S, JC PENNEY, H&M, ZARA, DICK'S SPORTING GOODS, BEST BUY, DSW, FOREVER 21, REGAL CINEMA AND SEVERAL NATIONAL JR ANCHORS ALONG WITH NUMEROUS SHOPS AND RESTAURANTS
- EASILY ACCESSIBLE:
  - ◊ 5 SEPARATE ENTRANCES/EXITS
  - ◊ SIGNALIZED ACCESS OFF WALDEN AVE
- IMMEDIATE ACCESS TO I-90 (EXIT 52) AND CLOSE PROXIMITY TO I-290 AND I-190
- EXCELLENT DEMOGRAPHICS
- TRAFFIC COUNTS: WALDEN AVE (27,390 CARS PER DAY)  
I-90 (133,900 CARS PER DAY)
- CONTACT KEVIN ZUGGER FOR FURTHER INFORMATION

<u>DEMOGRAPHICS</u>			
	<u>1 MILE</u>	<u>3 MILE</u>	<u>5 MILE</u>
<u>POPULATION</u>	7,190	109,915	314,885
<u>AVG HH INCOME</u>	\$68,193	\$63,290	\$72,403

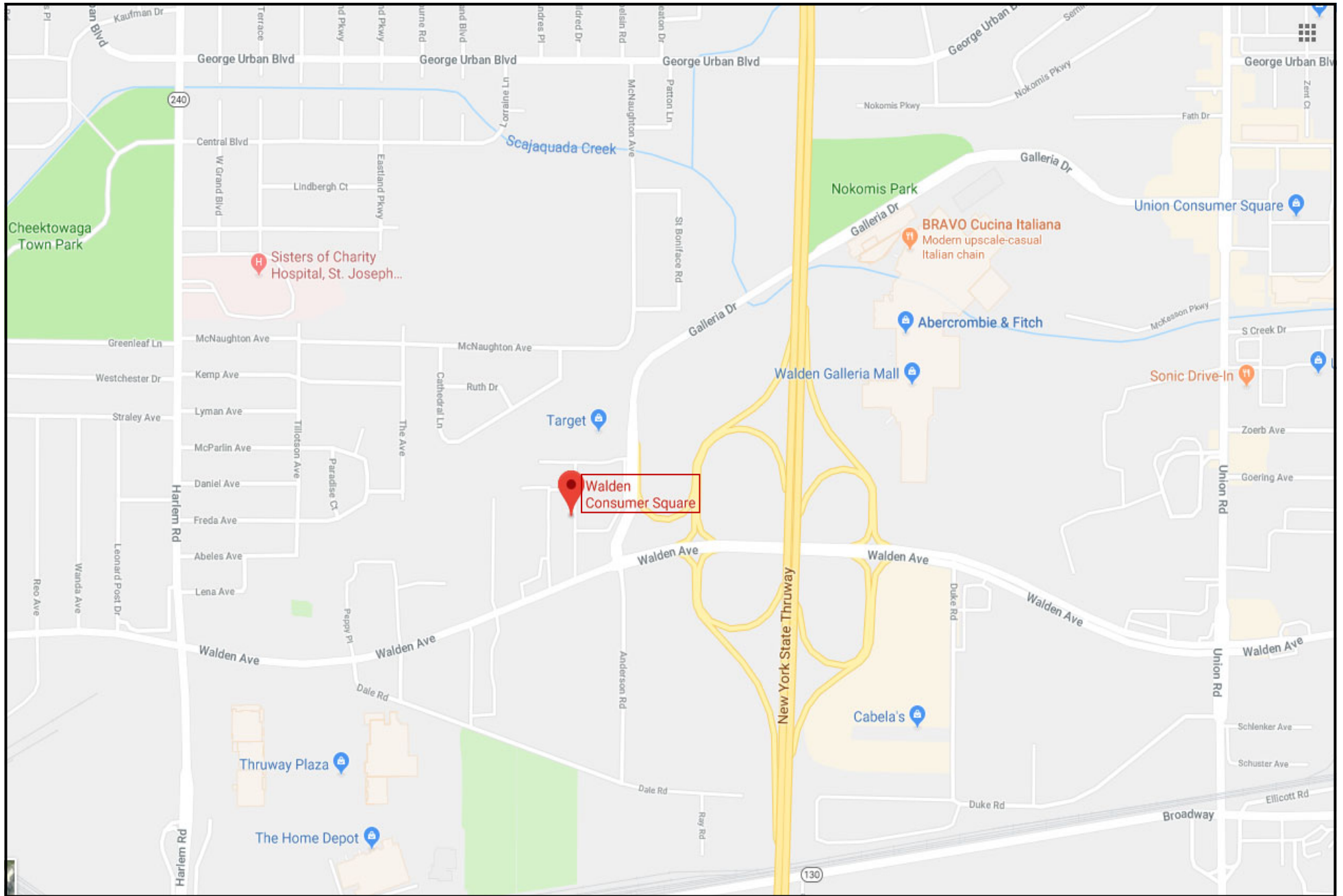


WALDEN  
CONSUMER  
SQUARE

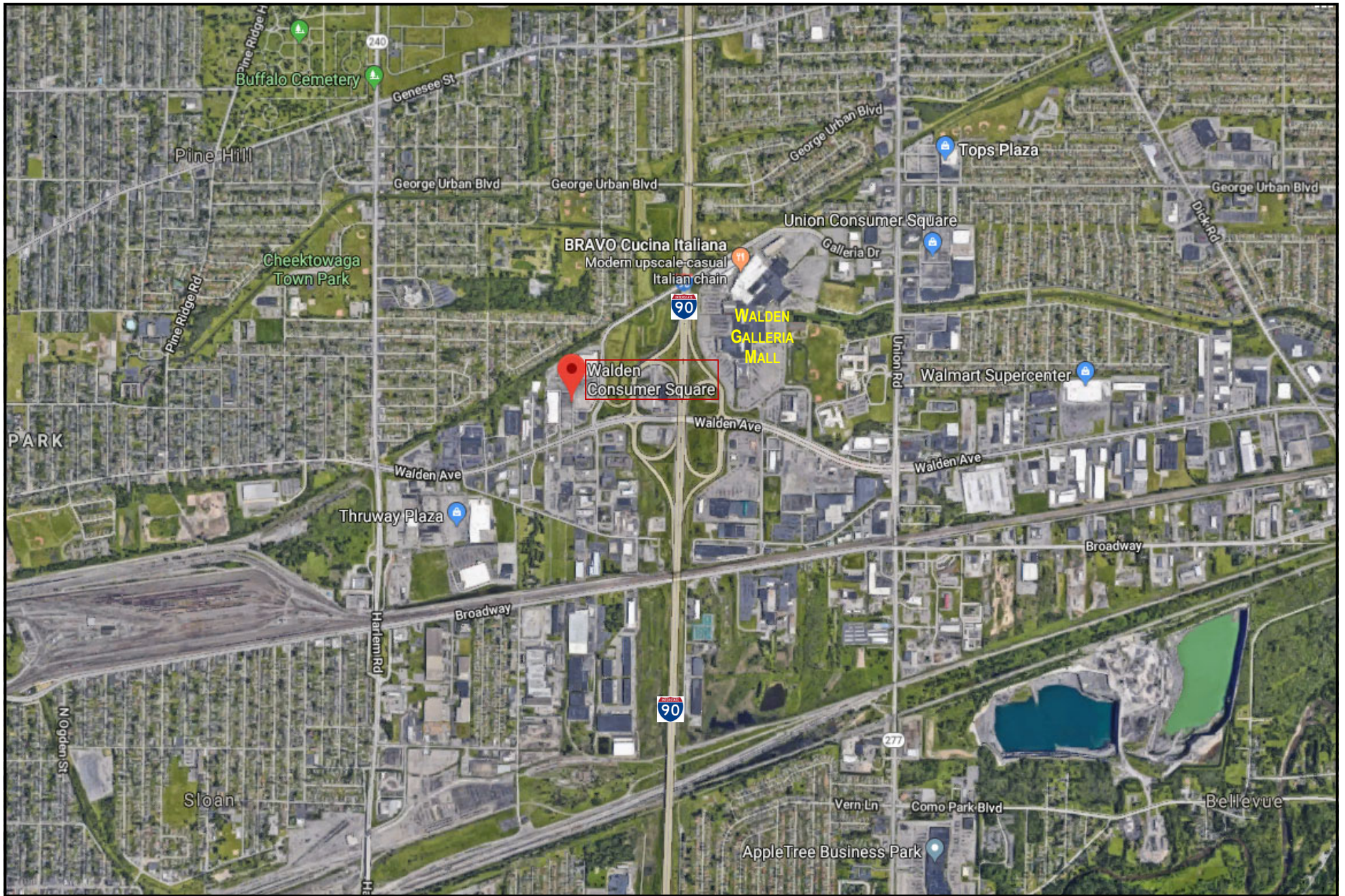




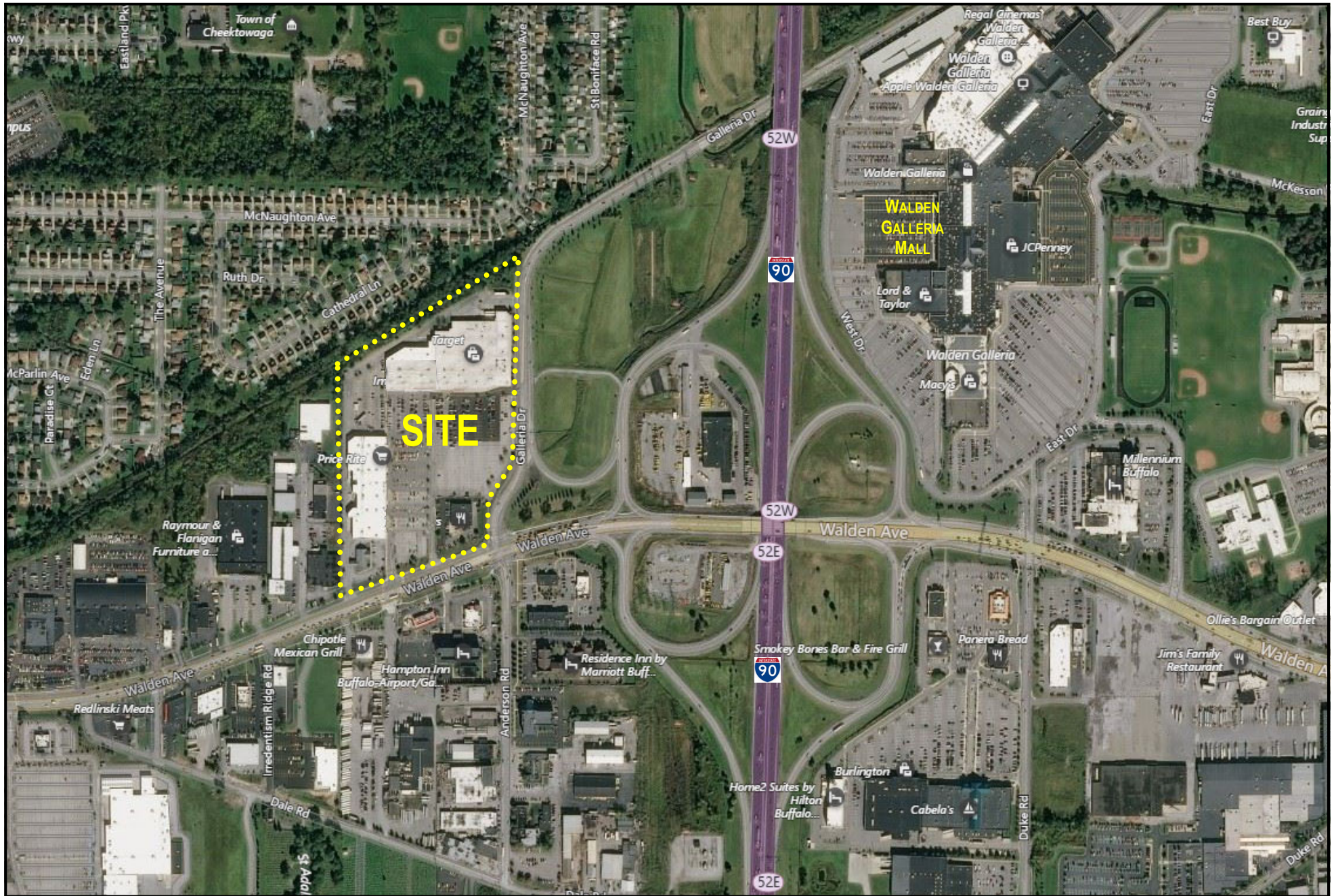
WALDEN CONSUMER SQUARE ~ CHEEKTOWAGA, NEW YORK



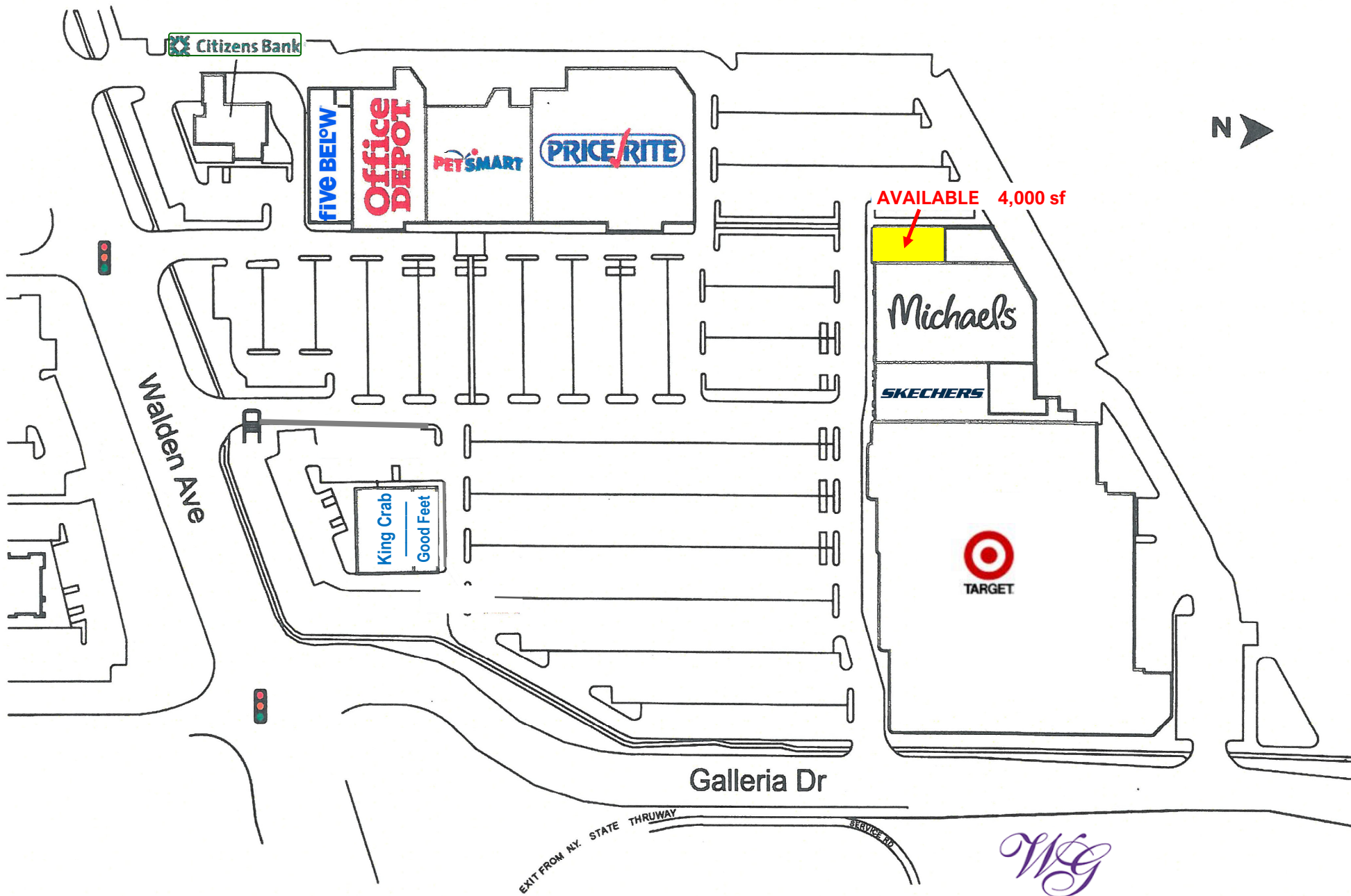
WALDEN CONSUMER SQUARE ~ CHEEKTOWAGA, NEW YORK



WALDEN CONSUMER SQUARE ~ CHEEKTOWAGA, NEW YORK



# WALDEN CONSUMER SQUARE ~ CHEEKTOWAGA, NEW YORK



WALDEN CONSUMER SQUARE ~ CHEEKTOWAGA, NEW YORK

