

CRESTVIEW COMMONS

2680 S. FERDON BLVD, CRESTVIEW FLORIDA

OUTPARCEL & RETAIL SPACE AVAILABLE



4053 MAPLE ROAD
AMHERST, NY 14226
PHONE (716) 833-4986 EXT 382
WWW.BENCHMARKGRP.COM
KEVIN ZUGGER
KZUGGER@BENCHMARKGRP.COM

CRESTVIEW COMMONS

MIXED USE DEVELOPMENT

2680 S. FERDON BLVD
CRESTVIEW, FLORIDA

- NEW 22 ACRE RETAIL DEVELOPMENT
- TENANTS INCLUDE MARSHALL'S, BURLINGTON, PLANET FITNESS, ALDI, ULTA, FIVE BELOW, CHIPOTLE AND CHILI'S
- 1.44 ACRE OUTPARCEL AVAILABLE FOR LEASE OR BUILD-TO-SUIT
- PROMINENTLY LOCATED ON SR-85 WITH EXCELLENT VISIBILITY TO 45,500 CPD
- ACCESS TO SIGNALIZED INTERSECTION ON SR-85
- AREA RETAILERS INCLUDE LOWE'S, PUBLIX, WALMART, PANERA BREAD, CHICK-FIL-A AND STARBUCKS

DEMOGRAPHICS			
	<u>1 MILE</u>	<u>3 MILE</u>	<u>5 MILE</u>
<u>POPULATION</u>	4,224	31,620	46,141
<u>AVG HH INCOME</u>	\$82,271	\$86,622	\$89,414



All information furnished as submitted may be subject to errors and omissions. No warranty or representation is made as to accuracy thereof.



CRESTVIEW, FLORIDA



**Available
1.44 Acres**

CRESTVIEW COMMONS ~ CRESTVIEW, FLORIDA



CRESTVIEW, FLORIDA

Physicians Dr.

Physicians Dr.

W. Redstone Ave.

**Available
1.44 Acres**
Crestview
Commons
Retail H

21st Century
Oncology
Crestview
Cancer Cntr.

Aspen Dental
Papa Murphys
Great Clips
Belton
Mattress Firm
Lewis Diamond
Panera

Redstone Plaza
Retail Center

Crestview
Corners
Shopping Mall

Hospital Drive

Price-Gregory Way

Hospital Dr.

ULTA
Burlington
five BELOW
Marshalls
planet fitness

CHIPOTE

ALDI

S. Ferdon Blvd. (S.R. 85)
44,000 V.P.D.

Proposed
Traffic Signal

Hospital Dr.

Staples

Pond 2
Pond 3
Pond 4

Wetlands
Area

Mr. Mattress

Shell

CRESTVIEW COMMONS - CRESTVIEW, FL





Available
1.44 Acres

Crestview
Commons



CRESTVIEW, FL



30,600 VPD

5,700 VPD

6,300 VPD

47,500 VPD

2,500 VPD

2,800 VPD



22,000 VPD

W. Redstone Ave.

E. Redstone Ave.

Brookmeade Dr.

Crosson St.

Mirage Ave.

Rasherry Rd.

Brookmeade Dr.

Mirage Ave.

Chick-FIL-A

Fendon Blvd. (SR. 85)

Price-Gregory Way

Physicians Dr.

Hospital Dr.

Hospital Dr.

Hospital Dr.

Shell

Econo Lodge

McD

Gamestop

GNC

Sally Beauty

Supercuts

Wendys

Home Town Inn & Suites

Hardees

Cracker Barrel

JC Seafood House

Quality Inn

Wendys

Wendys

Hungry Howies Pizza

Pizza Hut

Smoothie King

Medical

Medical

Medical

Medical

Medical

Medical

Medical

Medical

Medical

Medical

Medical

Medical

Medical

Medical

Medical

Medical

Medical

Medical

Medical

Medical

Medical

Medical

Medical

Medical

Medical

Medical

Medical

Medical

Medical

Medical

Medical

Medical

Medical

Medical

Medical

Medical

Medical

Medical

Medical

Medical

Medical

Medical

Medical

Medical

Medical

Medical

Medical

Medical

Medical

Medical

Medical

Medical

Medical

Medical

Medical

Medical

Medical

Medical

Medical

Medical

Medical

Medical

Medical

Medical

Medical

Medical

Medical

Medical

Medical

Medical

Medical

Medical

Medical

Medical

Medical

Medical

Medical

Medical

Medical

Medical

Medical

Medical

Medical

Medical

Medical

Medical

Medical

Medical

Medical

Medical

Medical

Medical

Medical

Medical

Medical

Medical

Medical

Medical

Medical

Medical

Medical

Medical

Medical

Medical

Medical

Medical

Medical

Medical

Medical

Medical

Medical

Medical

Medical

Medical

Medical

Medical

Medical

Medical

Medical

Medical

Medical

Medical

Medical

Medical

Medical

Medical

Medical

Medical

Medical

Medical

Medical

Medical

Medical

Medical

Medical

Medical

Medical

Medical

Medical

Medical

Medical

Medical

Medical

Medical

Medical

Medical

Medical

Medical

Medical

Medical

Medical

Medical

Medical

Medical

Medical

Medical

Medical

Medical

Medical

Medical

Medical

Medical

Medical

Medical

Medical

Medical

Medical

Medical

Medical

Medical

Medical

Medical

Medical

Medical

Medical

Medical

Medical

Medical

Medical

Medical

Medical

Medical

Medical

Medical

Medical

Medical

Medical

Medical

Medical

Medical

Medical

Medical

Medical

Medical

Medical

Medical

Medical

Medical

Medical

Medical

Medical

Medical

Medical

Medical

Medical

Medical

Medical

Medical

Medical

Medical

Medical

Medical

Medical

Medical

Medical

Medical

Medical

Medical

Medical

Medical

Medical

Medical

Medical

Medical

Medical

Medical

Medical

Medical

Medical

Medical

Medical

Medical

Medical

Medical

Medical

Medical

Medical

Medical

Medical

Medical

Medical

Medical

Medical

Medical

Medical

Medical

Medical

Medical

Medical

Medical

Medical

Medical

Medical

Medical

Medical

Medical

Medical

Medical

Medical

Medical

Medical

Medical

Medical

Medical

Medical

Medical

Medical

Medical

Medical

Medical

Medical

Medical

Medical

Medical

Medical

Medical

Medical

Medical

Medical

Medical

Medical

Medical

Medical

Medical

Medical

Medical

Medical

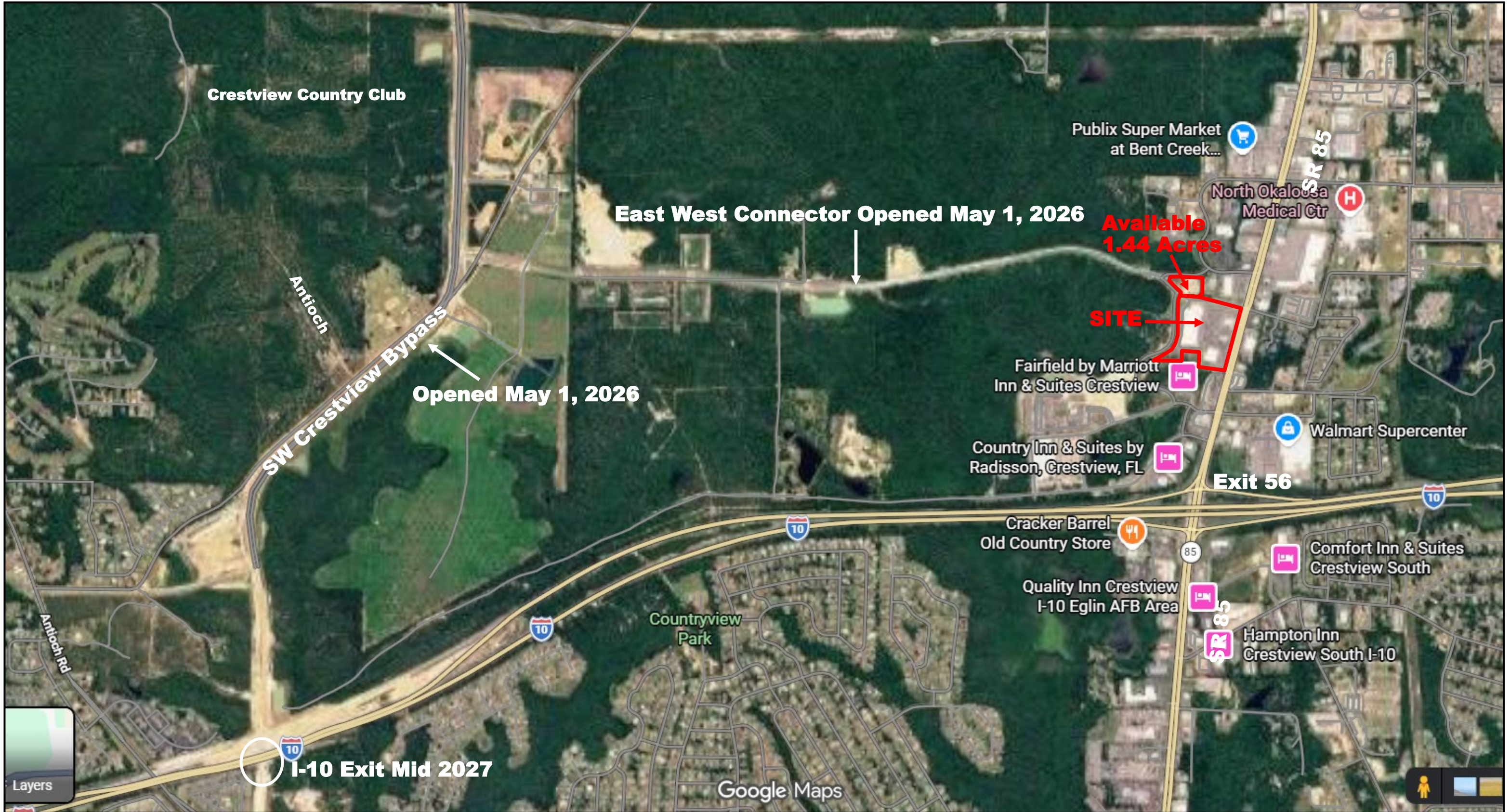
Medical

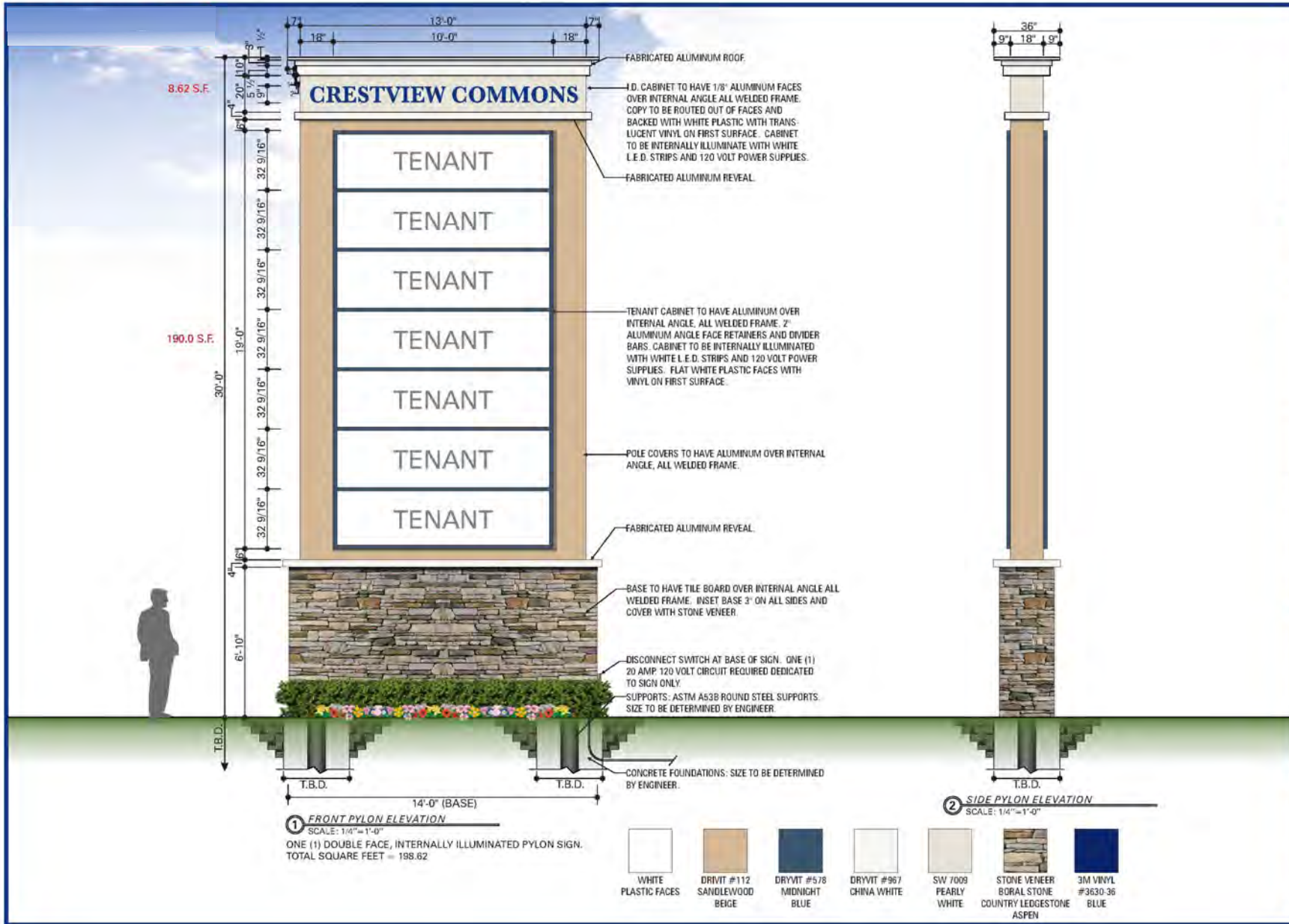
Medical

Medical

Medical

Medical





INTERNATIONAL C & C CORPORATION
DBA: SIGN X-PRESS

INTERNATIONAL Sign
FLORIDA

10831 Canal Street
Largo, FL 33777
1-727-541-5573
Fax: 1-727-544-7745
LIC. #ES 12000419
www.IntlSign.com

Client:
CRESTVIEW COMMONS
S. FERDON BLVD.
CRESTVIEW, FL

Date:
FEBRUARY 17, 2020

Drawing Number:
B20130-50-CRESTVIEW MONUMENTS

Revisions:

DATE	DESCRIPTION
1 00-00	REV
2 00-00	REV
3 00-00	REV
4 00-00	REV
5 00-00	REV
6 00-00	REV
7 00-00	REV
8 00-00	REV

Sales Person:
BETH RENFRO

Scale:
AS NOTED

Drawn by:
O. BARNITZ

CLIENT/LANDLORD APPROVAL
 APPROVED
 APPROVED AS NOTED
 REVISE AND RESUBMIT

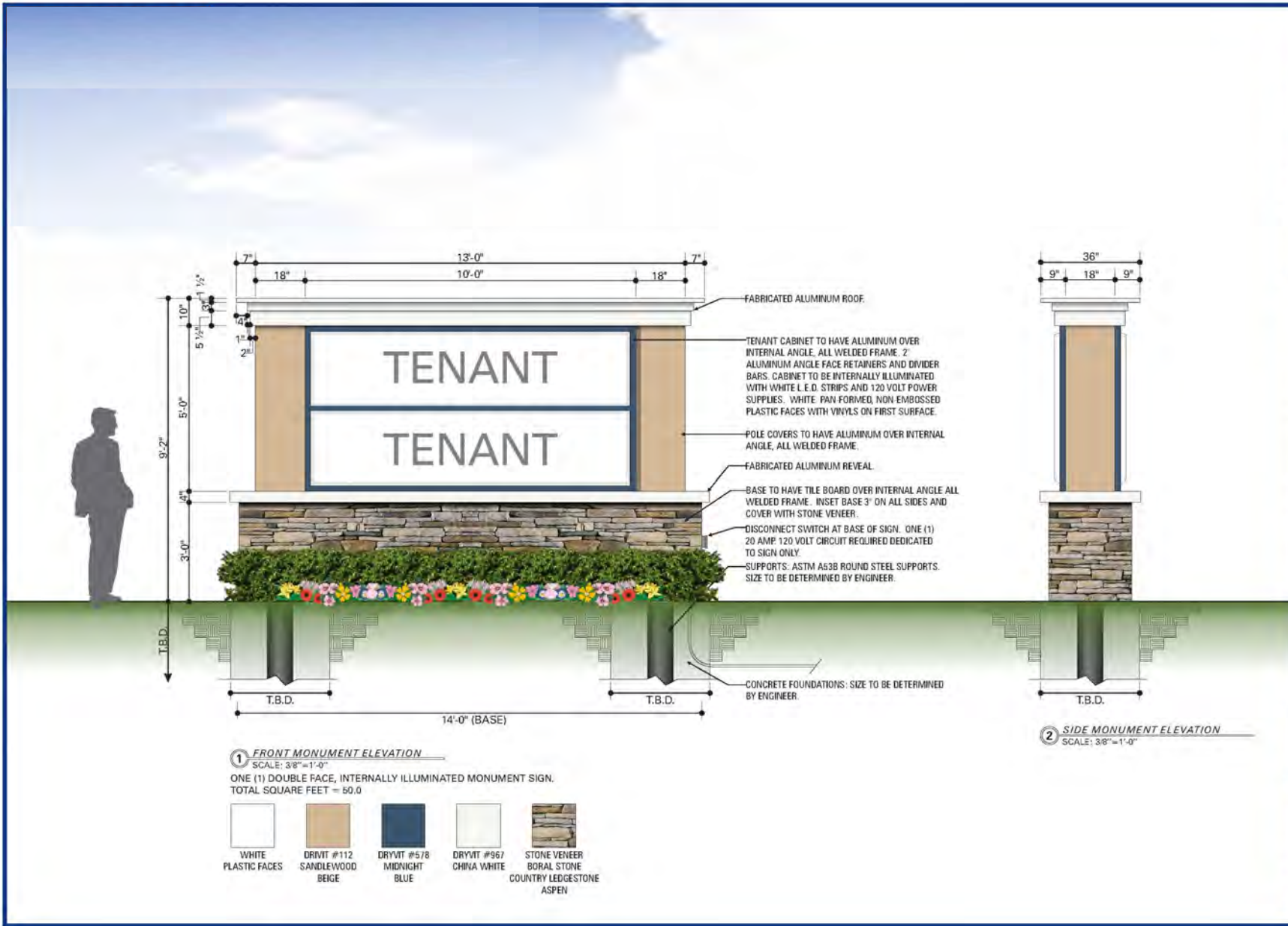
Signature: _____
Title: _____
Date: _____

SIGNATURE ABOVE ACKNOWLEDGES THAT ALL SPECIFICATIONS AND REQUIREMENTS FOR THESE COMPONENTS ARE UNDERSTOOD AND CORRECT.

THIS IS AN ORIGINAL DRAWING PROVIDED AS PART OF A PLANNED PROJECT AND IS NOT TO BE COPIED, COPIED OR REPRODUCED WITHOUT THE WRITTEN PERMISSION OF INTERNATIONAL SIGN COMPANY OR ITS AUTHORIZED AGENTS. ALL RIGHTS RESERVED.

SIGNS WILL COMPLY TO FLORIDA BUILDING CODE 2020 (7TH EDITION)
PRIMARY ELECTRICAL POWER TO SIGN TO BE BY OTHERS. ALL POWER TO BE 120 VOLT UNLESS OTHERWISE STATED.
ELECTRICAL TO USE ALL LISTED COMPONENTS AND SHALL MEET ALL N.E.C. STANDARDS 2017
SIGN MUST BE BRONDED IN COMPLIANCE WITH ARTICLE 609 OF THE NATIONAL ELECTRIC CODE.

SHEET NO. 105



INTERNATIONAL C & C CORPORATION
 DBA: SIGN X-PRESS
INTERNATIONAL Sign
 10831 Canal Street
 Largo, FL 33777
 1-727-541-5573
 Fax: 1-727-544-7745
 LIC. #ES 12000419
 www.IntlSign.com

Client:
 CRESTVIEW COMMONS
 S. FERDON BLVD.
 CRESTVIEW, FL

Date:
 FEBRUARY 17, 2020

Drawing Number:
 B20130-50-CRESTVIEW MONUMENTS

Revisions:

DATE	DESCRIPTION
1 00-00	NR
2 00-00	NR
3 00-00	NR
4 00-00	NR
5 00-00	NR
6 00-00	NR
7 00-00	NR
8 00-00	NR

Sales Person:
 BETH RENFRO

Scale:
 AS NOTED

Drawn by:
 O. BARNITZ

CLIENT/LANDLORD APPROVAL
 APPROVED
 APPROVED AS NOTED
 REVISE AND RESUBMIT
 Signature: _____
 Title: _____
 Date: _____
SIGNATURE ABOVE ACKNOWLEDGES THAT ALL SPECIFICATIONS AND DIMENSIONS ON THESE DRAWINGS ARE EXHAUSTIVE AND CORRECT.

THIS IS AN ORIGINAL DRAWING PROVIDED AS PART OF A PLANNED PROJECT AND IS NOT TO BE COPIED, COPIED OR REPRODUCED WITHOUT THE WRITTEN PERMISSION OF INTERNATIONAL SIGN COMPANY OR ITS AUTHORIZED AGENTS. ALL RIGHTS RESERVED.

SIGNS WILL COMPLY TO FLORIDA BUILDING CODE 2020 (7TH EDITION)
 PRIMARY ELECTRICAL POWER TO SIGN TO BE BY OTHERS. ALL POWER TO BE 120 VOLT UNLESS OTHERWISE STATED.
 ALL LISTED COMPONENTS AND SHALL MEET ALL N.E.C. STANDARDS 2017
SIGN MUST BE BROUGHT IN COMPLIANCE WITH ARTICLE 600 OF THE NATIONAL ELECTRIC CODE.

SHEET NO. 103