

CRESTVIEW MARKETPLACE

1308 NORTH FERDON BLVD, CRESTVIEW FLORIDA

RETAIL SPACE AVAILABLE



THE
BENCHMARK
GROUP

4053 MAPLE ROAD
AMHERST, NY 14226
PHONE (716) 833-4986 EXT 382
WWW.BENCHMARKGRP.COM
KEVIN ZUGGER
KZUGGER@BENCHMARKGRP.COM

CRESTVIEW MARKETPLACE

1308 NORTH FERDON BLVD

CRESTVIEW, FLORIDA

- WELL ESTABLISHED WINN DIXIE ANCHORED SHOPPING CENTER. TENANTS INCLUDE WINN DIXIE, PAPA JOHNS, FANTASTIC SAMS, ALLSTATE AND VERIZON
- CRESTVIEW IS ONE OF THE FASTEST GROWING CITIES IN THE US FOR POPULATIONS UNDER 150,000
- CRESTVIEW IS THE PANHANDLE'S FASTEST GROWING MARKET LOCATED AT HWY 85 AND OLD BETHEL ROAD
- CONSTRUCTION UNDERWAY OF THE NEW CRESTVIEW BYPASS SYSTEM, WITH THE CURRENT BEGINNING/ENDING POINT FOR THE BYPASS PLANNED TO BE AT THE INTERSECTION OF HWY 85 AND NORTH FERDON BLVD, INCREASING THE CENTER'S EXPOSURE AND ACCESS TO THE RESIDENTS OF CRESTVIEW

DEMOGRAPHICS			
	<u>3 MILE</u>	<u>5 MILE</u>	<u>7 MILE</u>
POPULATION	13,304	31,153	44,107
AVG HH INCOME	\$58,608	\$60,746	\$61,482





CRESTVIEW MARKETPLACE ~ CRESTVIEW, FLORIDA

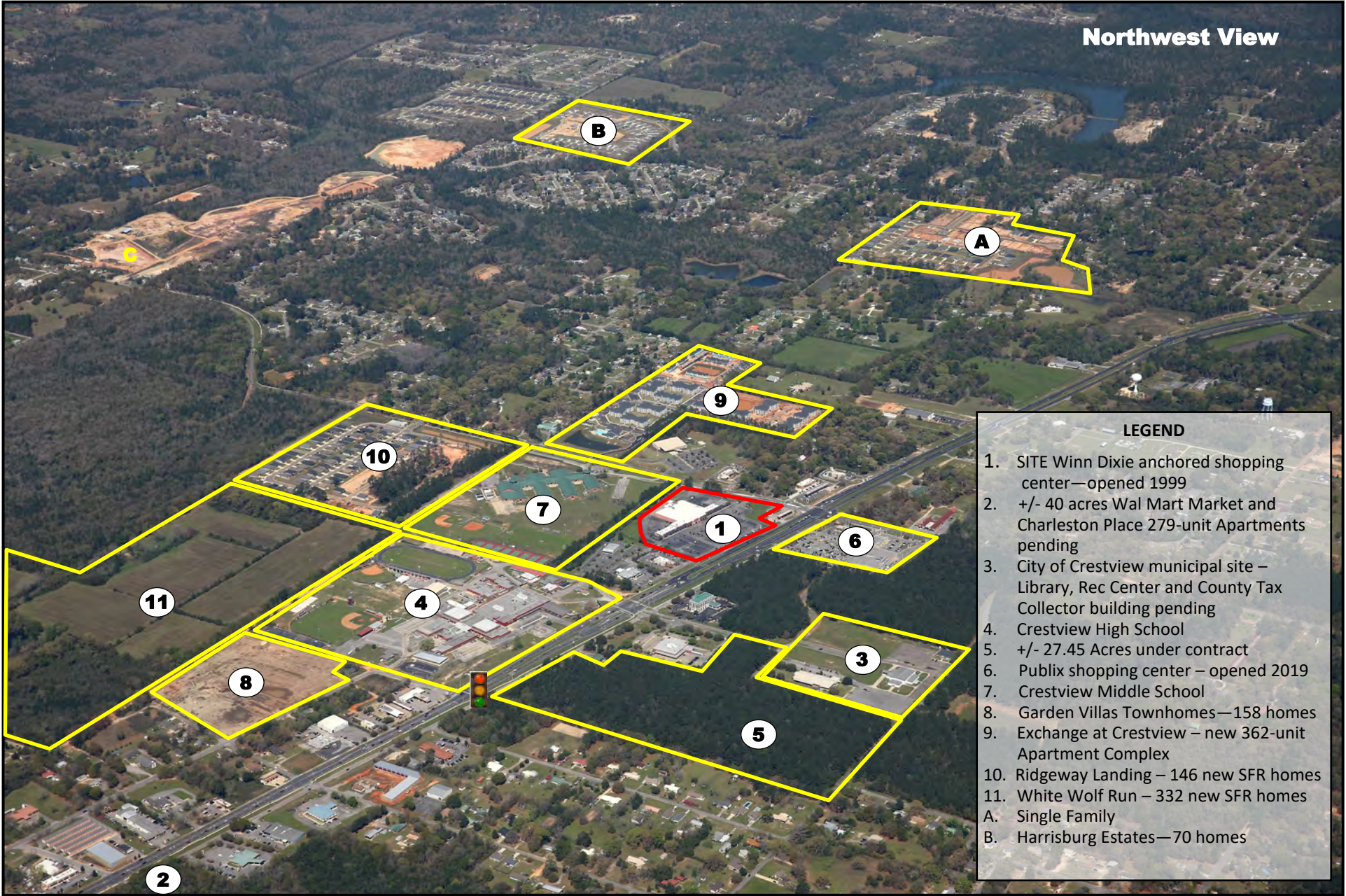


CRESTVIEW MARKETPLACE ~ CRESTVIEW, FLORIDA



CRESTVIEW MARKETPLACE ~ CRESTVIEW, FLORIDA

Northwest View

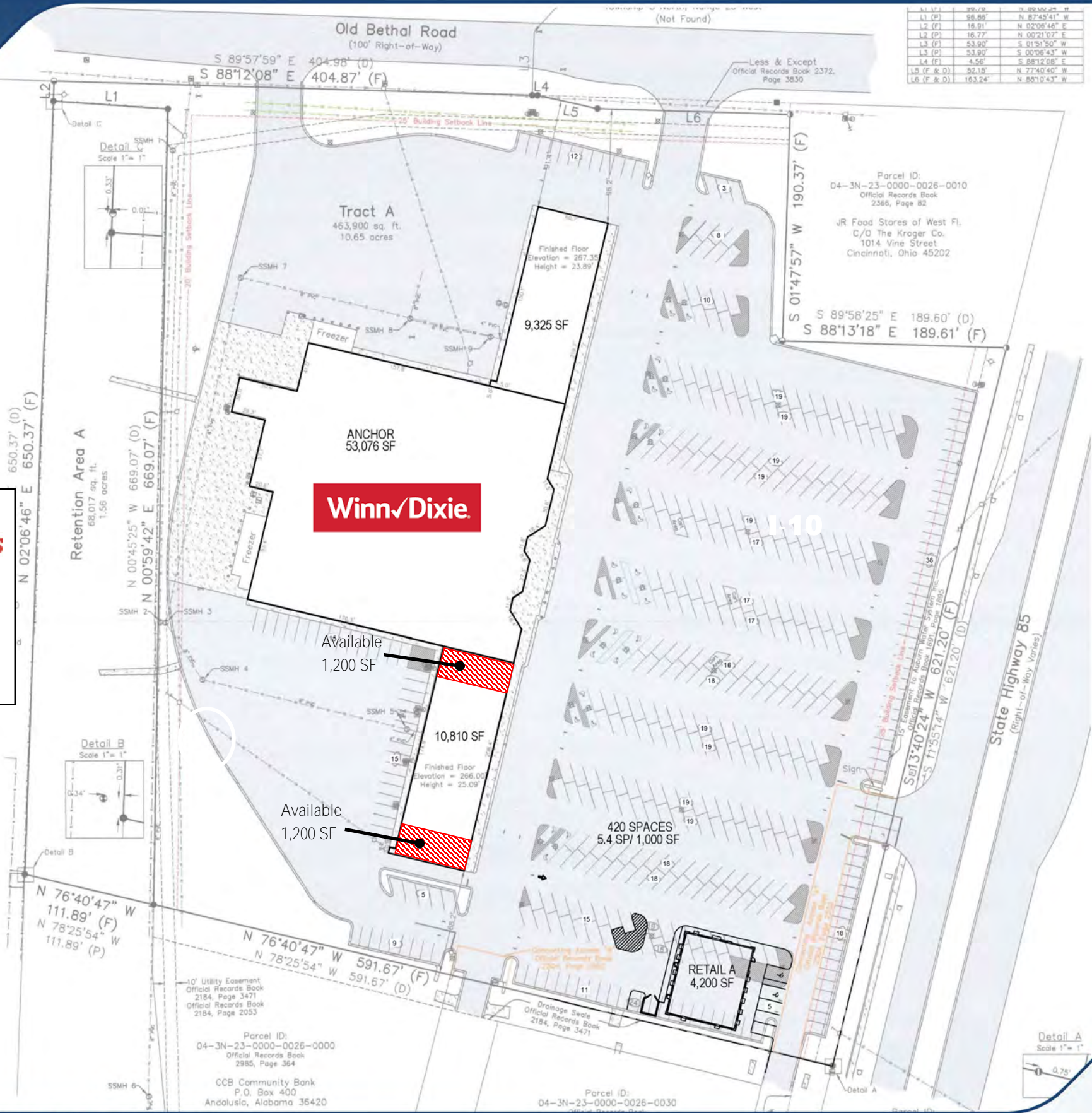


- LEGEND**
- 1. SITE Winn Dixie anchored shopping center—opened 1999
 - 2. +/- 40 acres Wal Mart Market and Charleston Place 279-unit Apartments pending
 - 3. City of Crestview municipal site – Library, Rec Center and County Tax Collector building pending
 - 4. Crestview High School
 - 5. +/- 27.45 Acres under contract
 - 6. Publix shopping center – opened 2019
 - 7. Crestview Middle School
 - 8. Garden Villas Townhomes—158 homes
 - 9. Exchange at Crestview – new 362-unit Apartment Complex
 - 10. Ridgeway Landing – 146 new SFR homes
 - 11. White Wolf Run – 332 new SFR homes
 - A. Single Family
 - B. Harrisburg Estates—70 homes



CRESTVIEW MARKETPLACE ~ CRESTVIEW, FLORIDA

TENANTS INCLUDE:



L1 (P)	98.86'	N 87°45'41" W
L2 (P)	16.91'	N 02°06'46" E
L2 (P)	16.77'	N 00°21'07" E
L3 (P)	53.90'	S 01°21'50" W
L3 (P)	33.90'	S 00°06'43" W
L4 (F)	4.56'	S 88°12'08" E
L5 (F & D)	52.19'	N 77°40'40" W
L6 (F & D)	163.24'	N 88°10'43" W



GRAPHIC SCALE
SCALE: 1"= 100'

P:\BenchMark\Group\Crestview Marketplace\Design\Plans\Concept\sp-6-1117.dwg

DISCLAIMER: CONCEPTUAL SITE LAYOUT HAS BEEN PREPARED WITH THE BEST INFORMATION AVAILABLE AND DOES NOT REPRESENT FINAL ENGINEERING ELEMENTS. THIS PLAN IS PRELIMINARY AND SUBJECT TO CHANGE PENDING FINAL ENGINEERING ANALYSIS AND SHALL ONLY BE UTILIZED AS AN ESTIMATE FOR DEVELOPMENT FEASIBILITY.

PROJECT NO.
PLAN SCALE: 1"= 100'-0"
DATE: 6/3/24

THE BENCHMARK GROUP



KPMFranklin.com