

CASCADES OF BRIMFIELD

3975-4050 CASCADES BLVD | KENT, OHIO

RETAIL SPACE AVAILABLE



4053 MAPLE ROAD
AMHERST, NY 14226
PHONE (716) 833-4986 EXT 382
WWW.BENCHMARKGRP.COM
KEVIN ZUGGER
KZUGGER@BENCHMARKGRP.COM

THE CASCADES OF BRIMFIELD

3975-4050 CASCADES BLVD

BRIMFIELD TOWNSHIP/KENT, OHIO 44240

- AVAILABLE: ~ EXISTING RETAIL 1,500 - 9,700 SQ FT
~ FUTURE DEVELOPMENT JR ANCHOR POSITIONS
- REGIONAL POWER CENTER WITH APPROXIMATELY 500,000 GROSS LEASEABLE SQUARE FEET ON 37.11 ACRES
- ANCHORED BY LOWE'S, KOHL'S AND WALMART SUPERCENTER
- TENANTS INCLUDE MARSHALL'S, PETCO, FIVE BELOW, DOLLAR TREE, SHOE SENSATION, VERIZON AND PANERA BREAD ALONG WITH SEVERAL RESTAURANTS AND CONVENIENCES
- COMPLETED IN PHASES FROM 2007-2012
- SHOPPING CENTER ATTRACTS TRAFFIC FROM BOTH CHAPEL HILL AND STOW MARKETS SERVING THE EASTERN SIDE OF AKRON
- TWO SIGNALIZED POINTS OF ACCESS ALONG TALLMADGE RD
- AMPLE PARKING
- IMMEDIATE ACCESS TO I-76 (EXIT 31)
- I-76 TRAFFIC COUNTS: 55,000 VEHICLES PER DAY
- CONTACT KEVIN ZUGGER FOR FURTHER INFORMATION

<u>CASCADES OF BRIMFIELD</u>			
<u>DEMOGRAPHICS</u>			
	<u>1 MILE</u>	<u>3 MILE</u>	<u>5 MILE</u>
POPULATION	2,640	22,438	129,733
AVG HH INCOME	\$113,471	\$91,095	\$76,607

All information furnished as submitted may be subject to errors and omissions. No warranty or representation is made as to accuracy thereof.



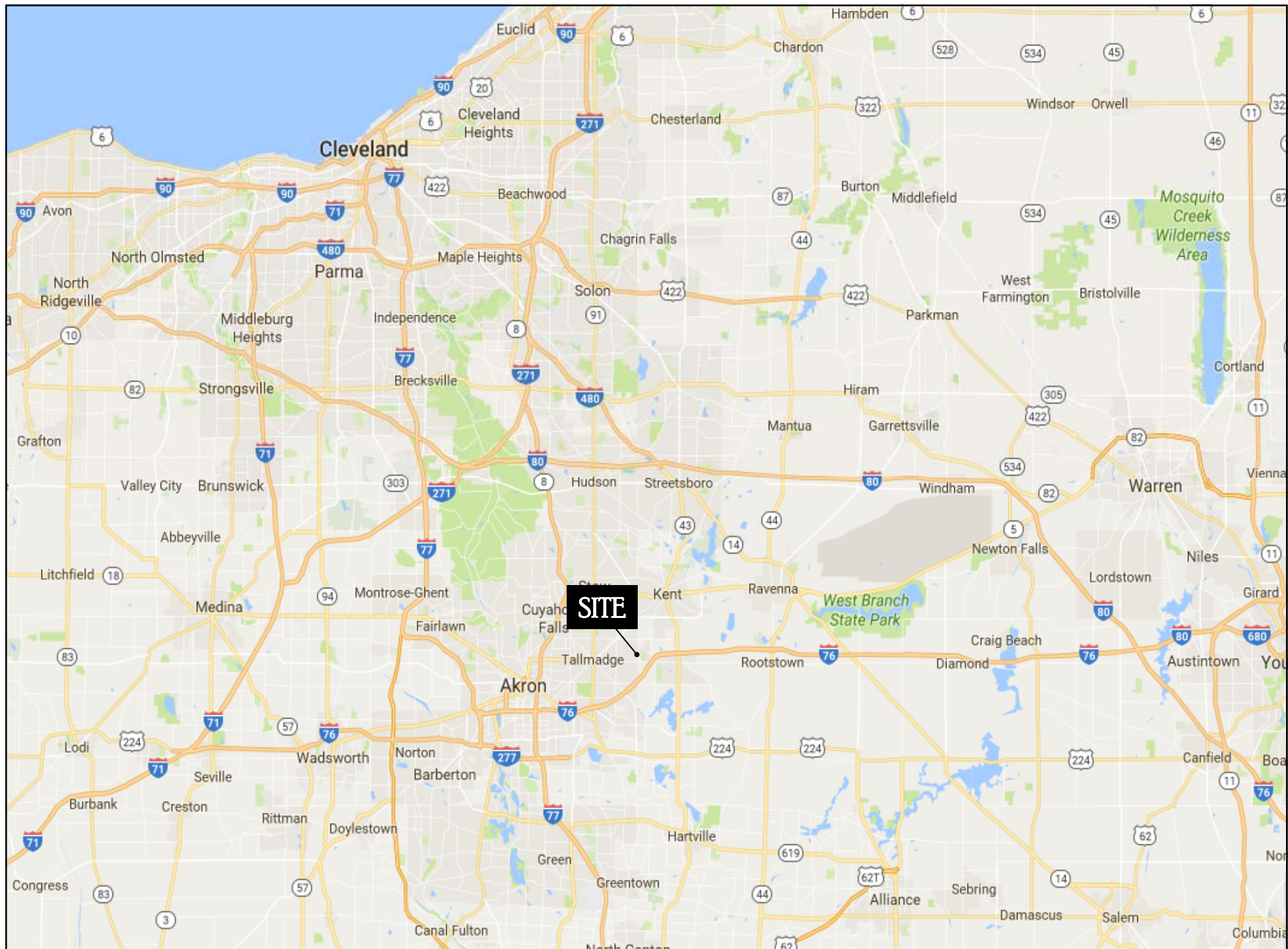


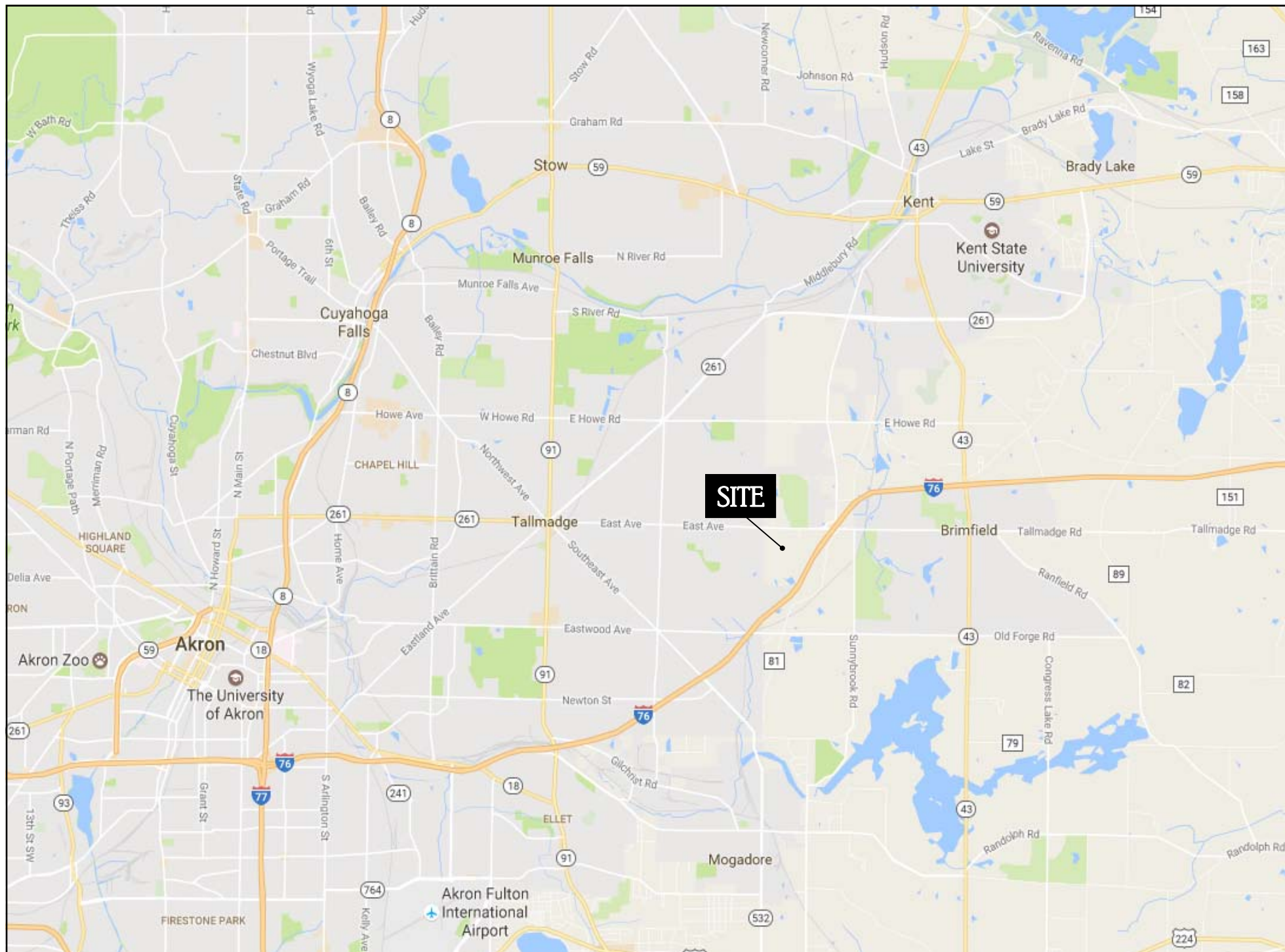
THE CASCADES OF BRIMFIELD

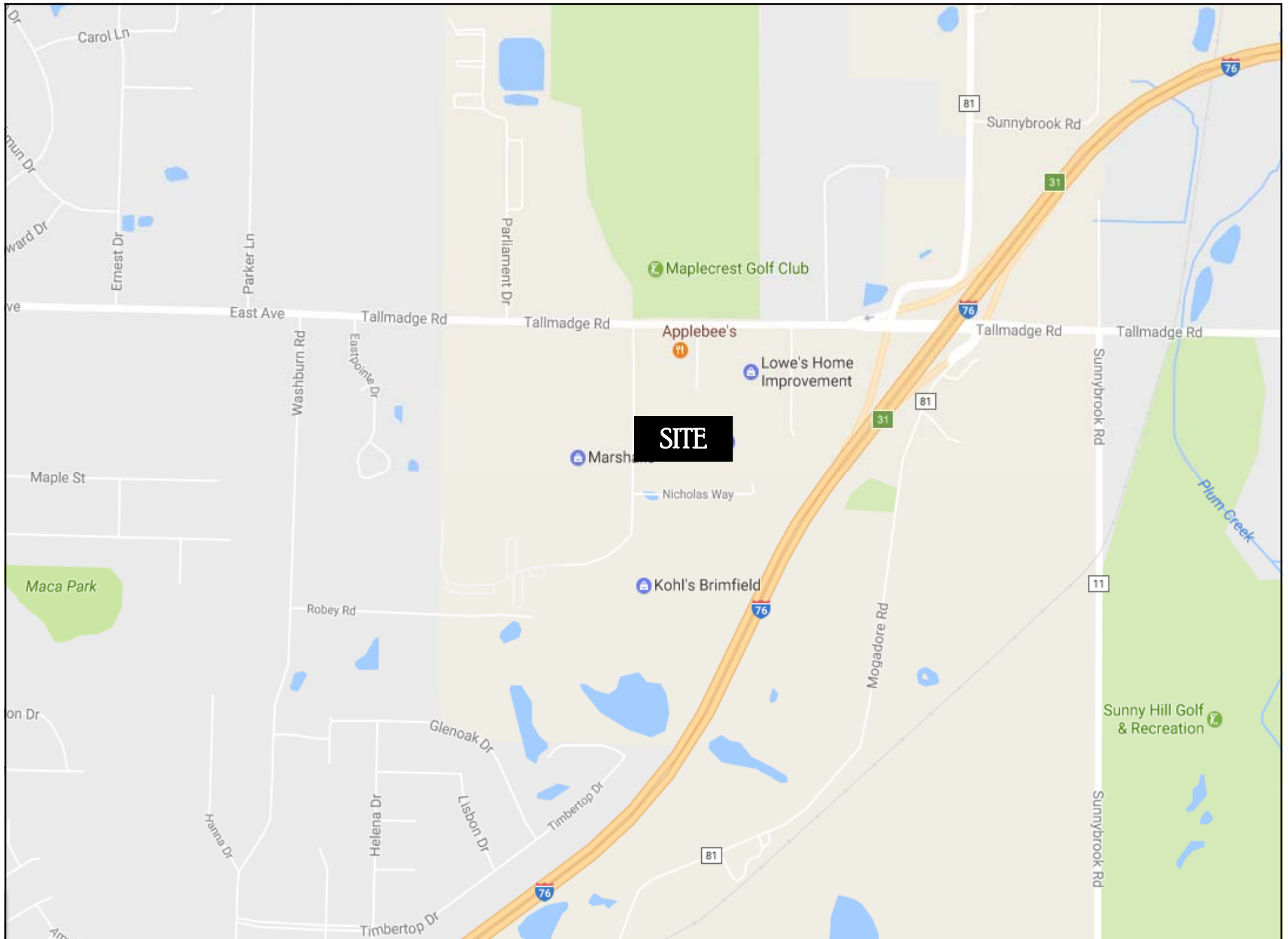


THE CASCADES OF BRIMFIELD TENANTS



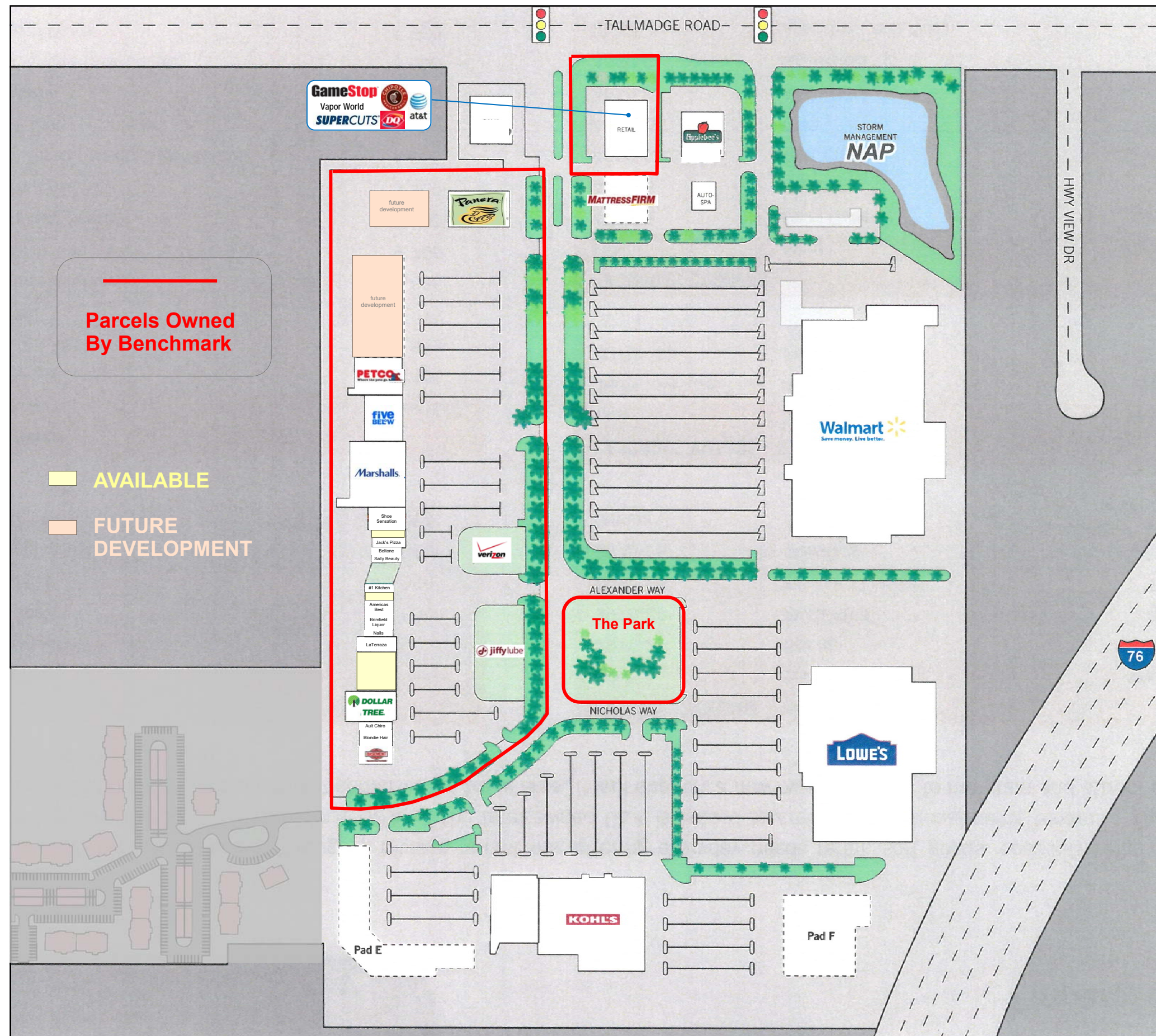








THE CASCADES OF BRIMFIELD ~ KENT, OHIO



THE CASCADES OF BRIMFIELD

SITE PLAN