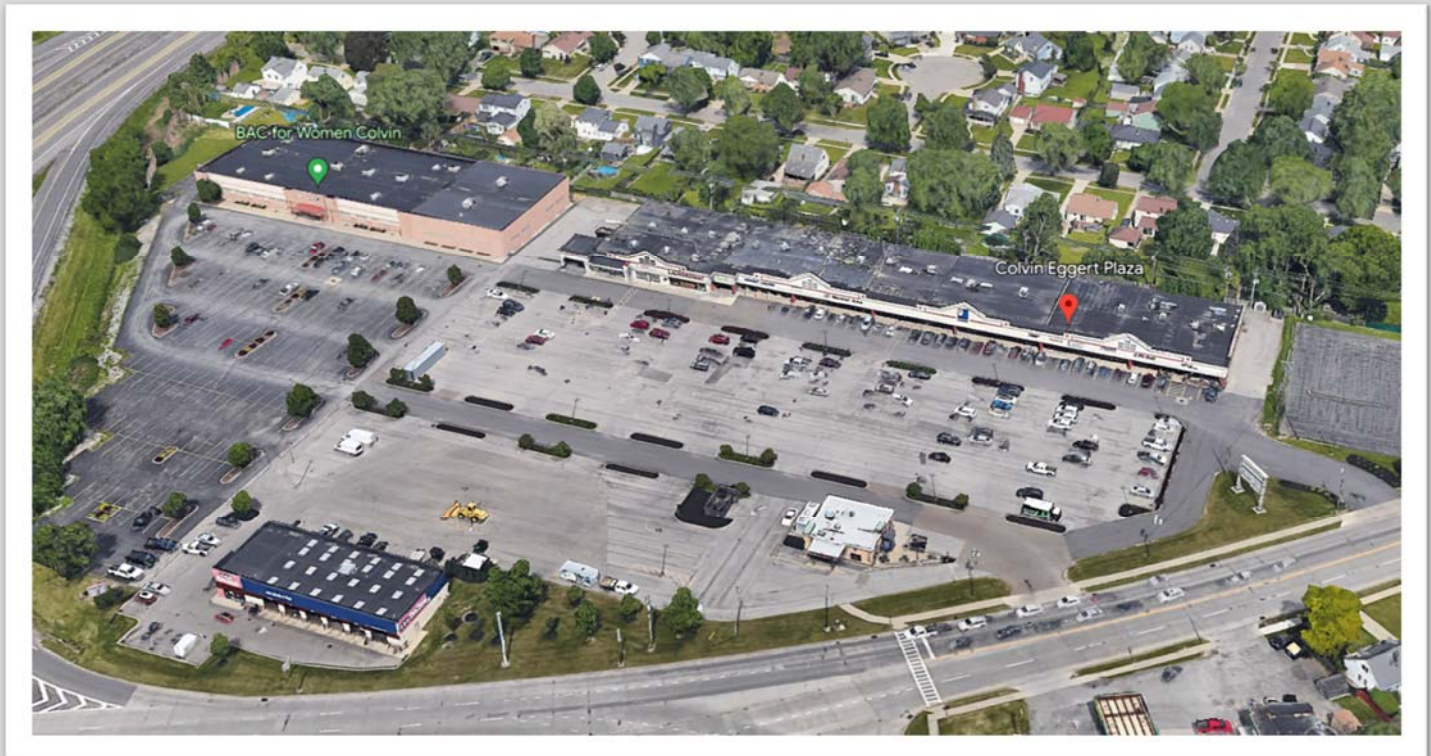


COLVIN-EGGERT PLAZA

3153 - 3193 COLVIN BLVD | TONAWANDA, NEW YORK

NO SPACE AVAILABLE FOR LEASE



4053 MAPLE ROAD
AMHERST, NY 14226
PHONE (716) 833-4986 EXT 382
WWW.BENCHMARKGRP.COM
KEVIN ZUGGER
KZUGGER@BENCHMARKGRP.COM

FEATURES:

COLVIN-EGGERT PLAZA

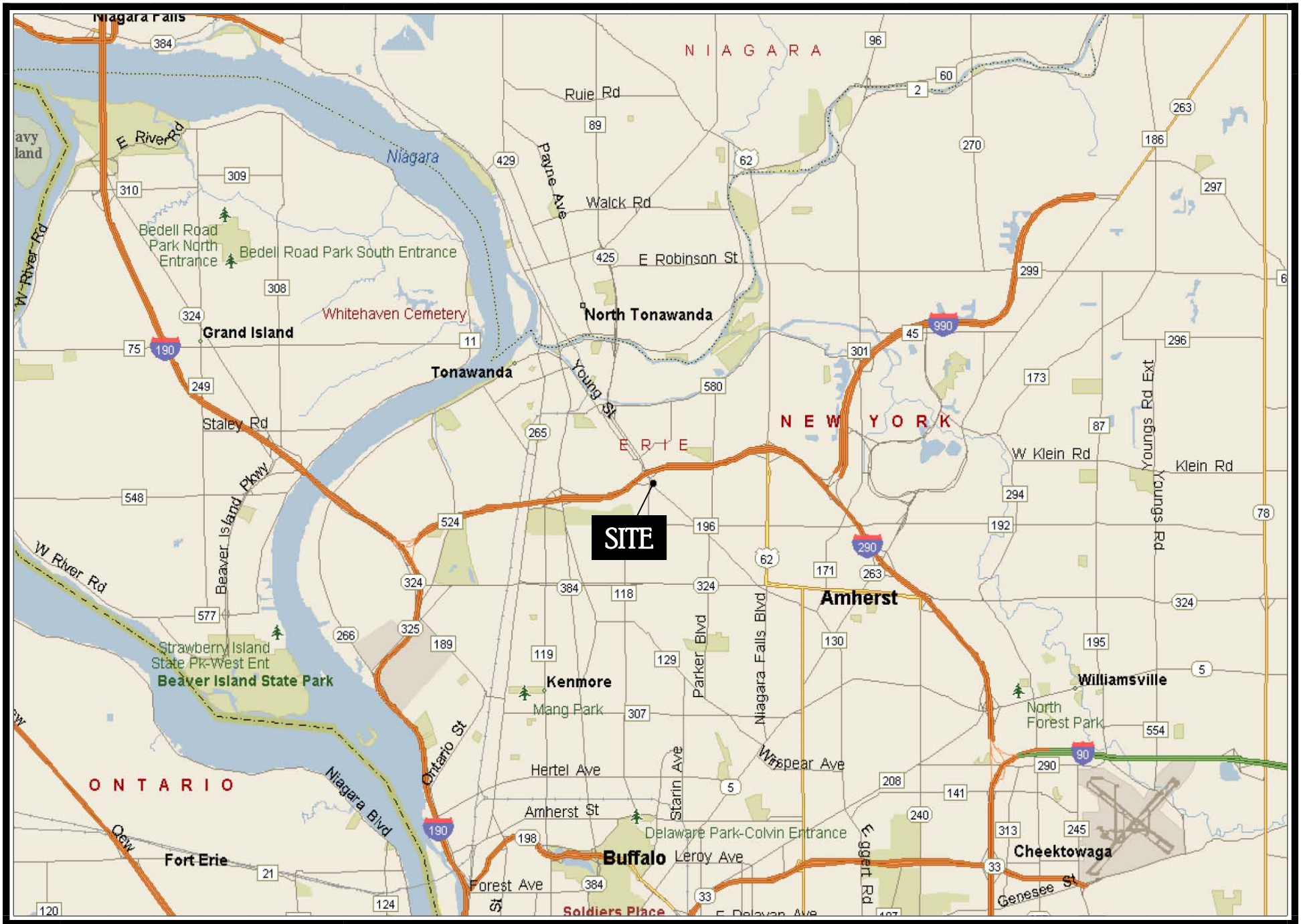
3155 - 3193 EGGERT ROAD

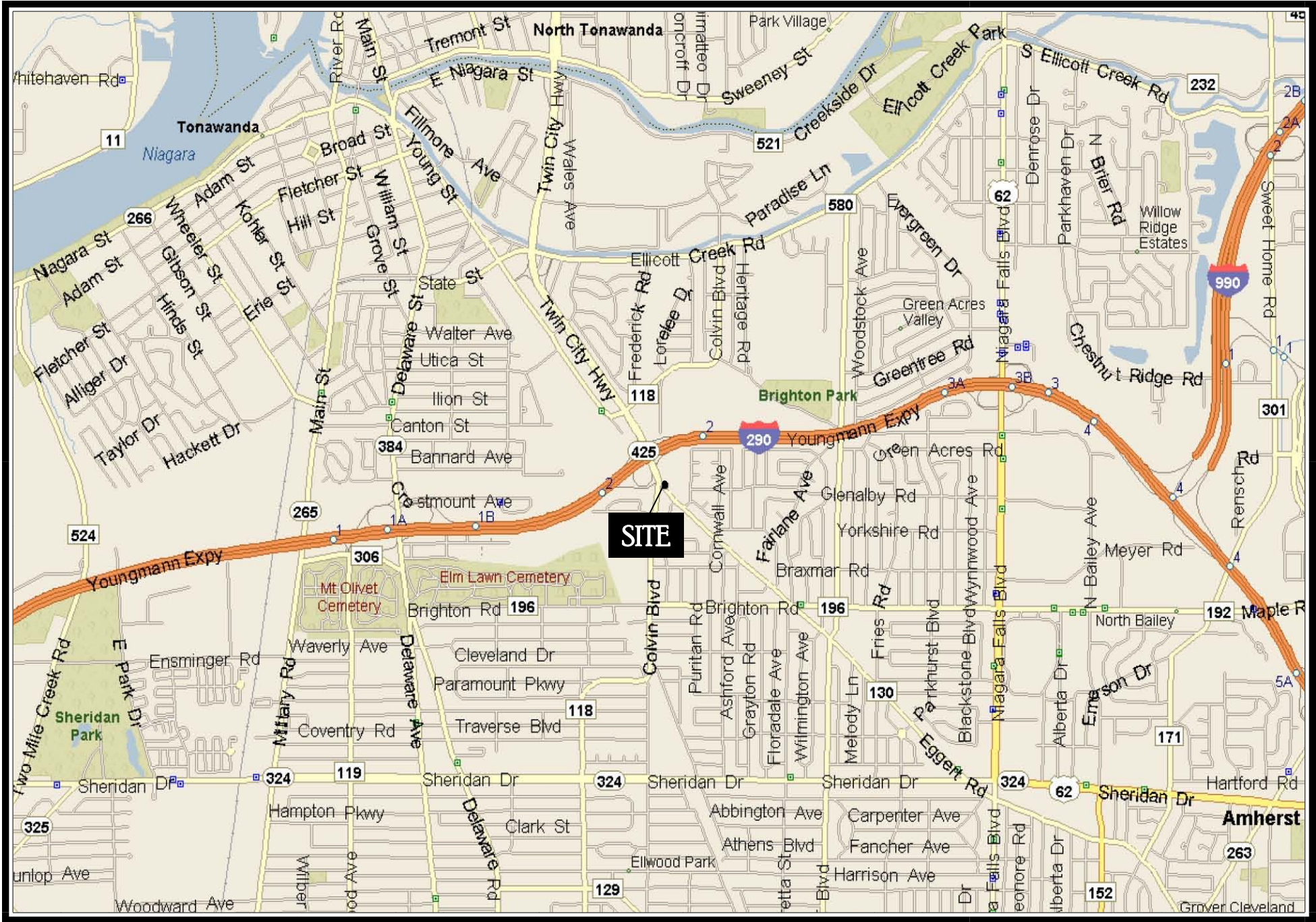
TONAWANDA, NEW YORK

- CURRENTLY NO SPACE AVAILABLE FOR LEASE
- 41,800 SQUARE FOOT SHOPPING CENTER ON 6.5 ACRES
- SITE REDEVELOPMENT COMPLETE WHICH INCLUDED PARKING LOT, SITE LIGHTING AND COMMON AREAS
- TENANTS INCLUDE OMNI SERVICES, GOODWILL, JINDO MARTIAL ARTS, PEP BOYS, JUST PIZZA, FIT FUEL, TOP SHELF LAUNDROMAT, MIDNIGHT LIQUORS, US RENAL CARE, BLACKWINDS PET STORE, MAGGIE'S NAILS, CAROL ANN HAIR & 290 SLIDE SPORTS BAR
- LOCATED AT THE INTERSECTION OF COLVIN BOULEVARD AND EGGERT ROAD IMMEDIATELY OFF THE I-290 (EXIT 2)
- HIGHLY VISIBLE FROM I-290 (YOUNGMAN HIGHWAY)
- FOR FURTHER INFORMATION, CONTACT KEVIN ZUGGER

COLVIN-EGGERT PLAZA TONAWANDA, NY







Colvin-Eggert Plaza
Aerial View ~ North



RAC Rent-A-Center

FAMILY DOLLAR

BIG LOTS!

SUBWAY

GOODYEAR

TOPS



Wendy's
HAMBURGERS



TEXAS
BROCCOLI

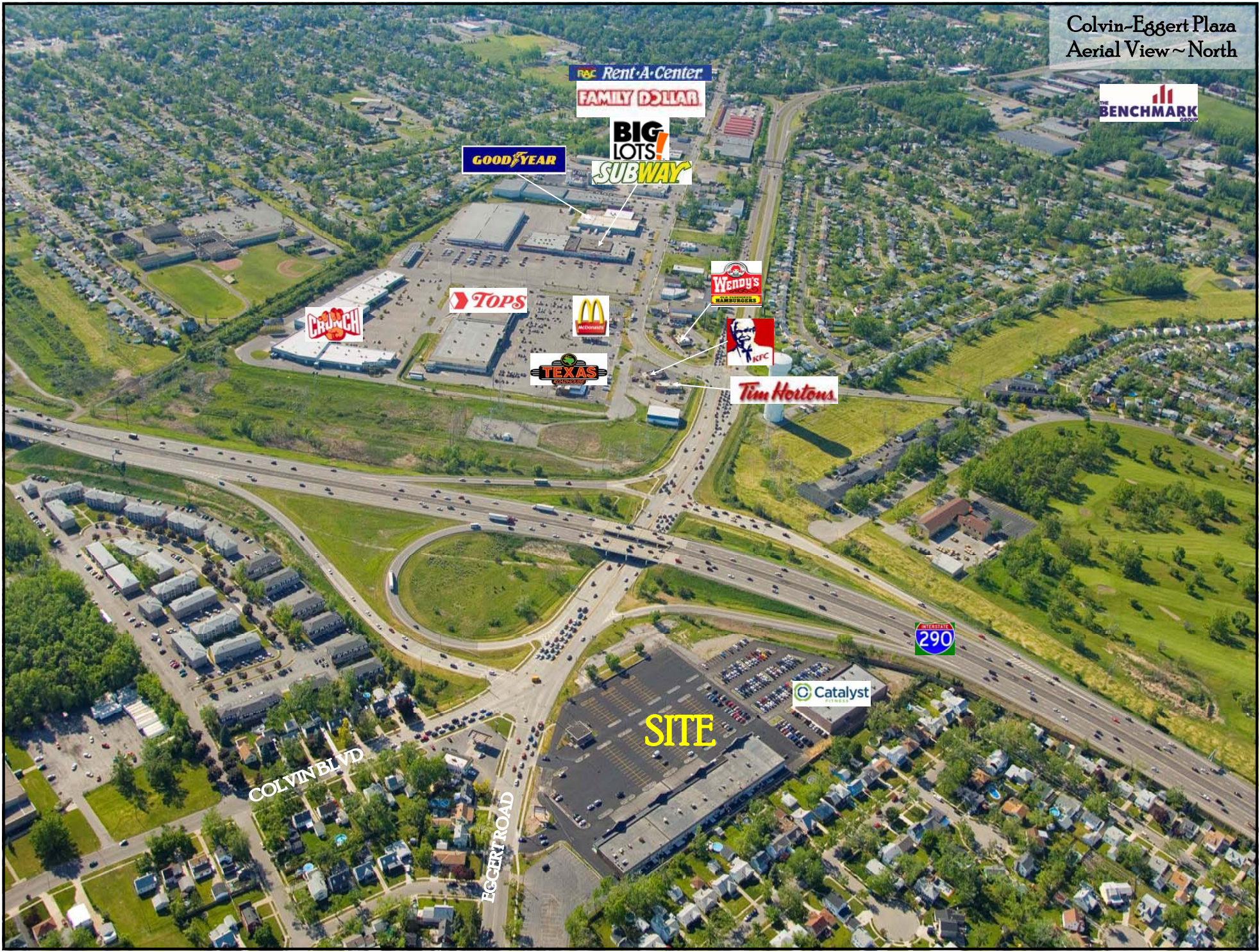
Tim Hortons

Catalyst
ENERGY

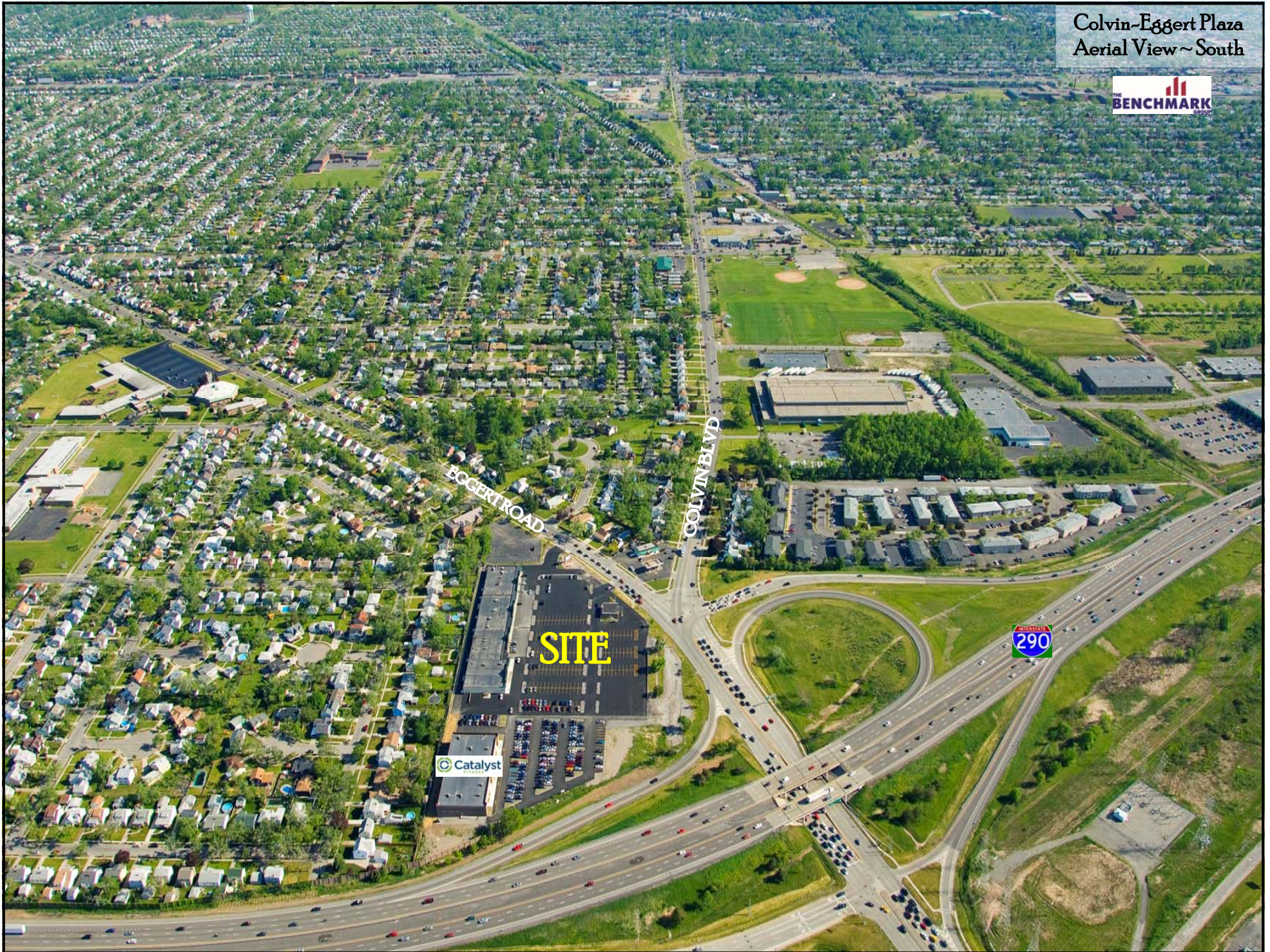
SITE

COLVIN BLVD

EGGERT ROAD



Colvin-Eggert Plaza
Aerial View ~ South



EGGERT ROAD

COLVIN BLVD

SITE

Catalyst

INTERSTATE
290

Colvin-Eggert Plaza

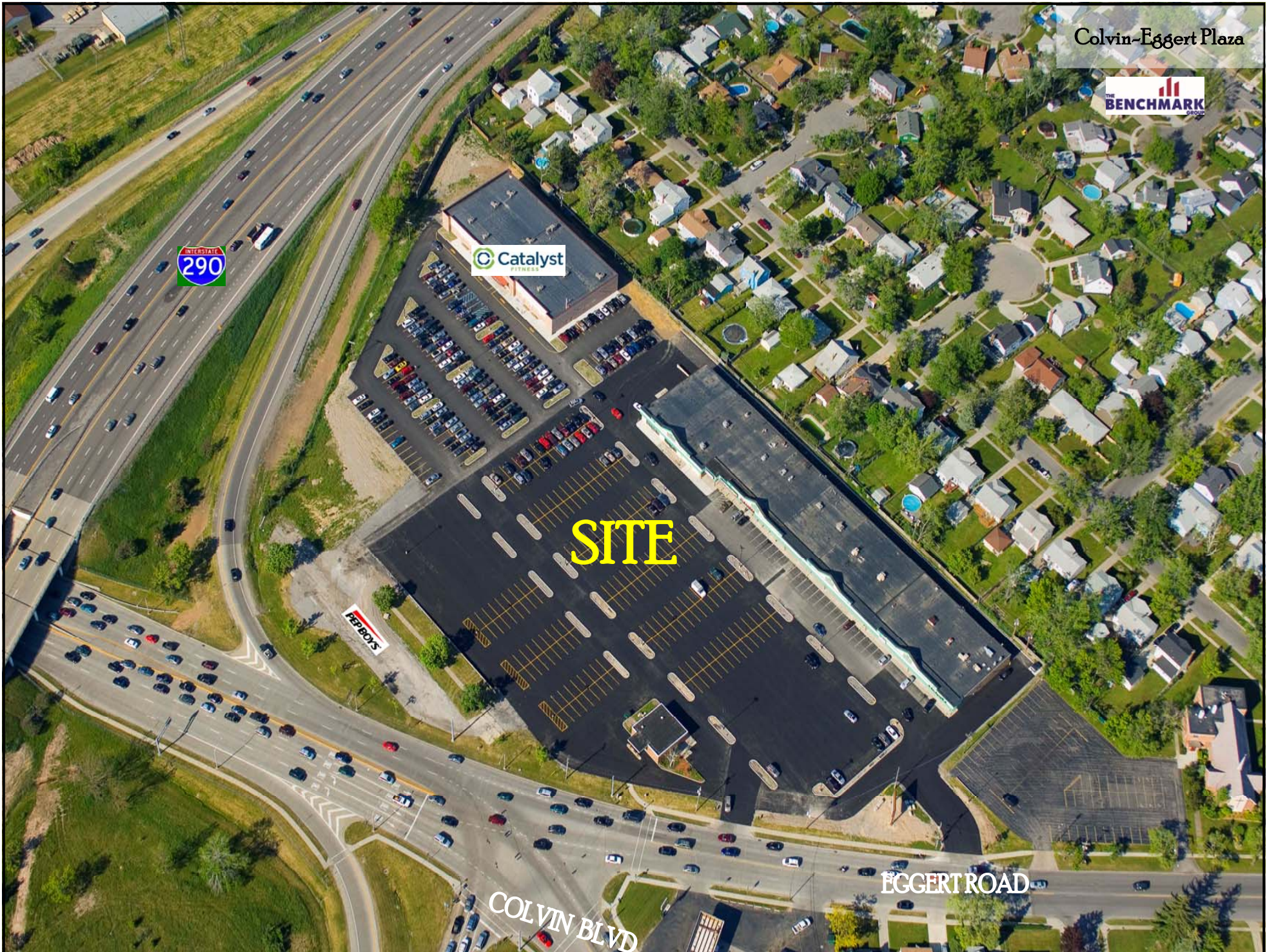


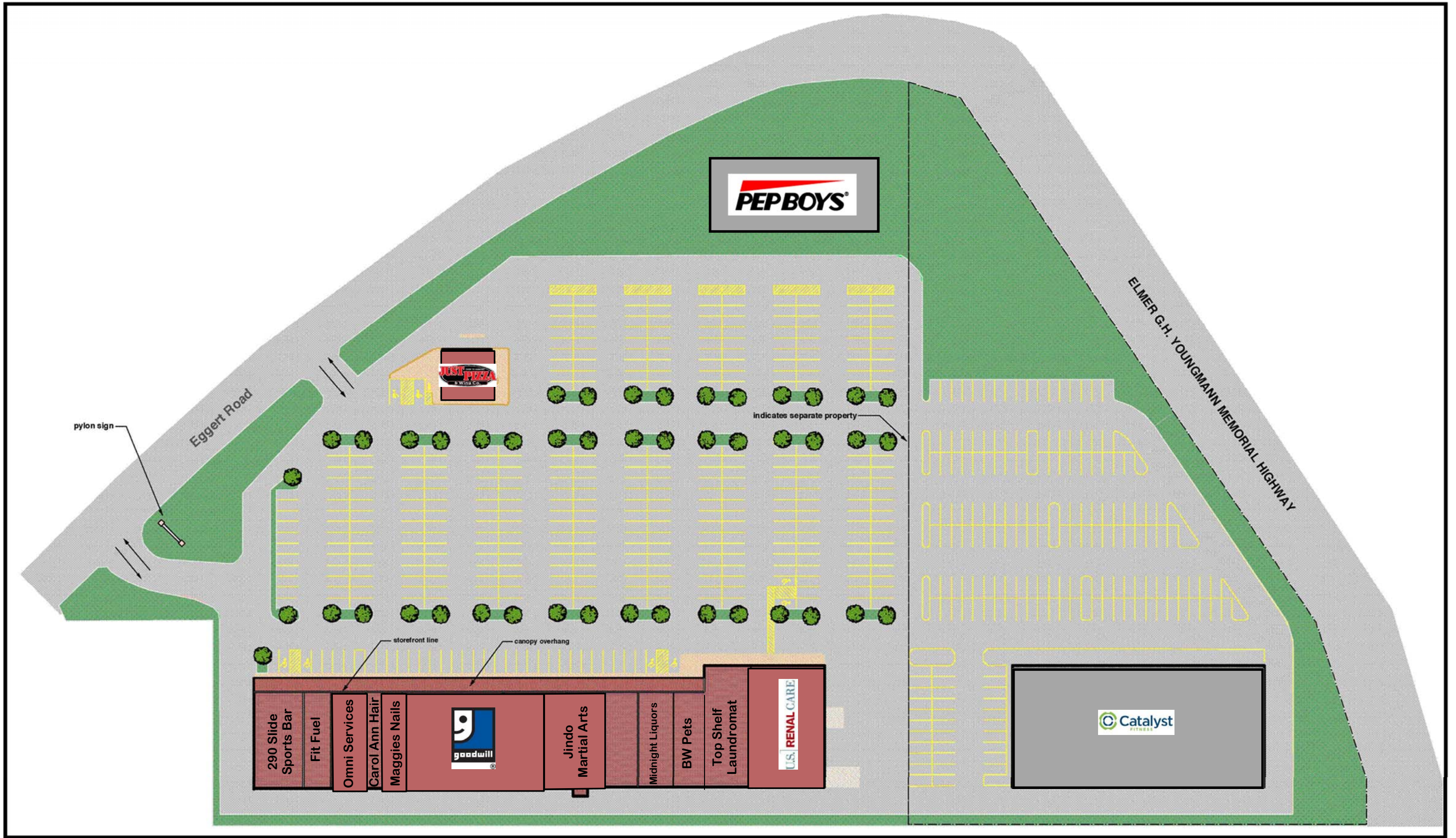
SITE

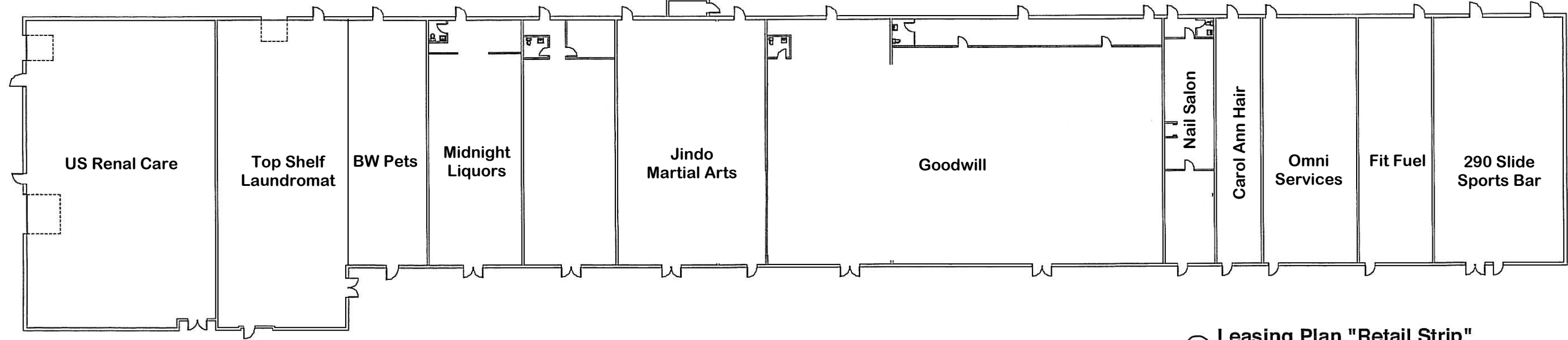


EGGERT ROAD

COLVIN BLVD



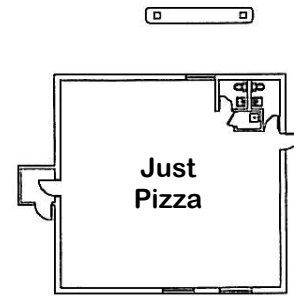




1 Leasing Plan "Retail Strip"
Scale: 1/16" = 1'-0"



2 Storefront Elevations
Scale: 1/16" = 1'-0"



3 Leasing Plan "Outbuilding One"
Scale: 1/16" = 1'-0"

NO.	REVISIONS DESCRIPTION	DATE

DRAWN BY: KAK
CHECKED BY: KAK

Leasing Plan
L-1
JOB NO. 06040

KASPRZAK & KLOTZBACH ARCHITECTS P.C.
These drawings and their contents are the property of Kasprzak & Klotzbach Architects P.C. and are to be used only for the specific project noted on these drawings. No part of these drawings may be reproduced, stored in a retrieval system, or transmitted in any form or by any means, electronic, mechanical, photocopying, recording, or by any information storage and retrieval system, without the prior written consent of Kasprzak & Klotzbach Architects P.C. A Professional Engineer, in the state of New York, has reviewed these drawings and has approved them for the purposes stated above.

Colvin-Eggert Plaza
Tonawanda, New York

Kasprzak & Klotzbach Architects P.C.
10225 Main Street
Clarence, New York 14031
(716) 759-0595 Fax: (716) 759-0593
E-mail: K2Marchitects.com